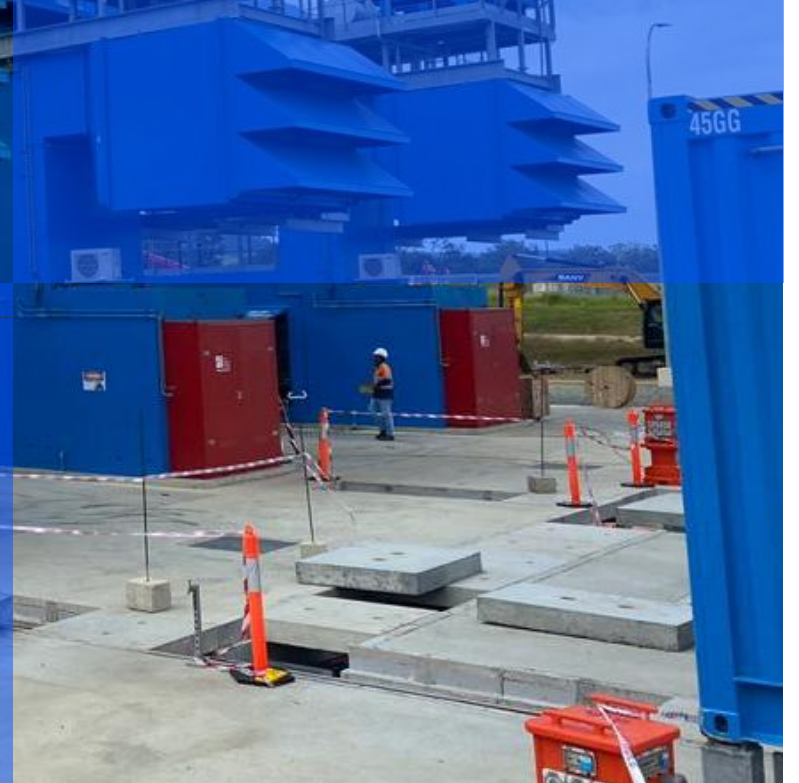
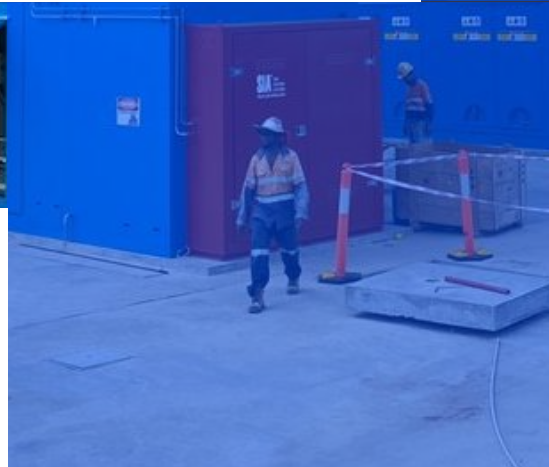




**Twenty20**  
ENERGY



# Twenty20 Energy



# T20 is a Turn-key, Independent Energy Producer and AI Infrastructure Company

## Practical Real World Solutions Today

- T20 is powering a practical energy transition for the AI revolution
- We are technology agnostic and create tailored solutions for:
  - **Commercially viable, scalable & reliable power**
  - **Flexible high-density compute co-location and GPUaaS facilities**
- Our solutions balance commercial, geographical and environmental needs to allow projects to proceed with the lowest practical emissions

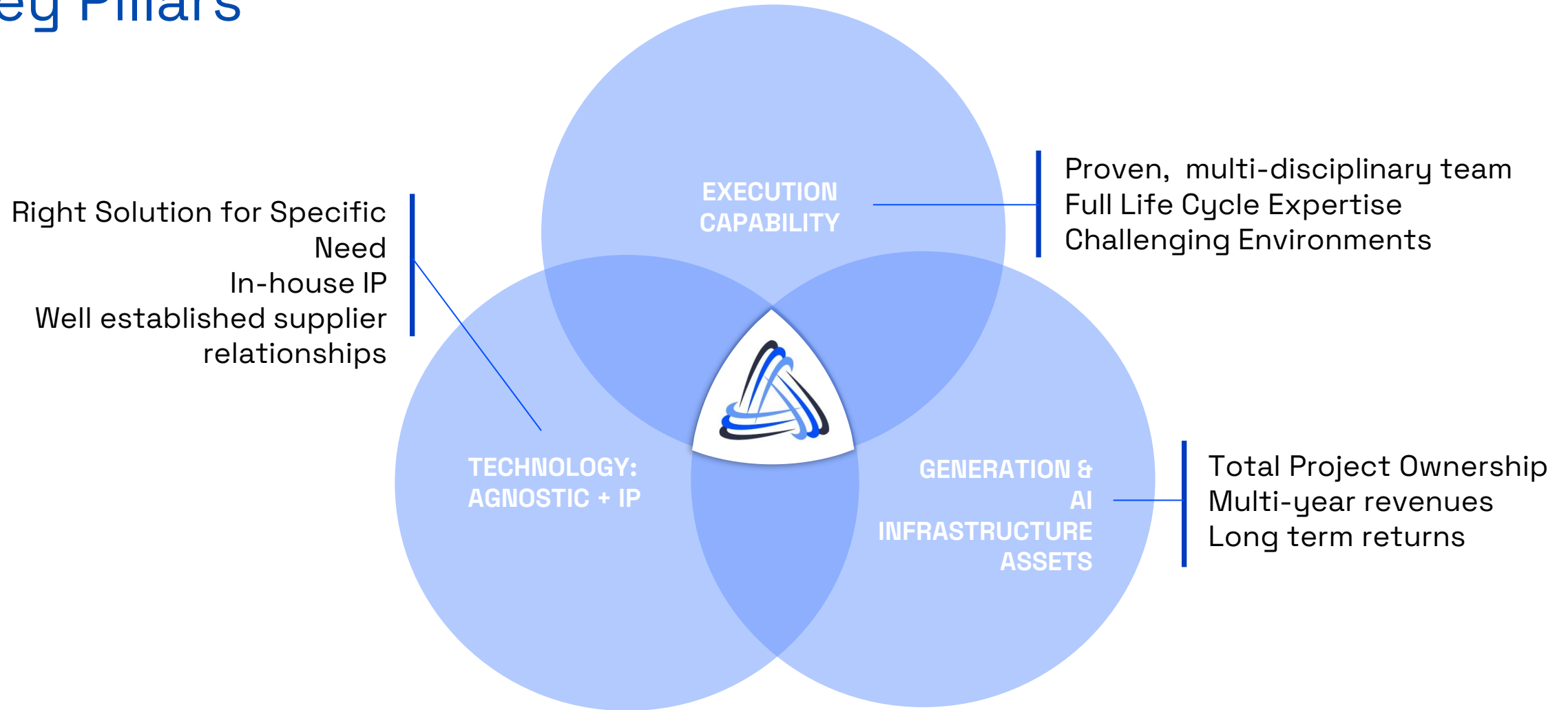
## In-House Execution

- We have full in-house expertise from Engineering & Design, through Execution & Commissioning, to Operation & Maintenance
- Proven team operating in some of the world's most challenging environments
- Large network to allow rapid scale-up for project delivery
- Well established supplier relationships
- Our own technology IP

## Managed Energy Assets

- We invest in, and directly operate and manage energy & AI infrastructure assets
- We produce energy for AI infrastructure, utilities or industrial users under PPAs

# Key Pillars



WHY TWENTY20?

# Major energy project experience

**57MW**

Total Power Generation Capacity Installed

**50GW**

Major Energy Projects Delivered by the Team

**\$120M**

Total Power Generation Project Value Executed

We have an experienced management team whose collective experience spans major project delivery in wind, hydro, solar, gas and other major energy technologies

1

## ESTABLISHED CORE BUSINESS

Historic profitable core operations invested into project development

2

## STRONG PIPELINE

Our pipeline of future AI generation projects has all key components secured and is expected to deliver long-term revenue and EBITDA

3

## PROVEN MANAGEMENT TEAM

Our management team has a proven track record of growing a business and successfully delivering energy projects

*Figures are USD*



# 250+ Years in Infra, Power & Energy Project Delivery



**GEOFF LAWRENCE**  
CEO

20+ years' in power and electrical. High-level negotiation & account development, long-term relationships with key clients



**IAIN DEAY**  
CFO

20+ years' experience in corporate finance, business development, and M&A across the UK, Asia Pacific and the Middle East



**JIM SCHNIEDERS**  
PRESIDENT

30+ years' in project development and energy project management. Former MD at Black & Veatch



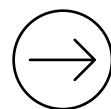
**DUNCAN FOSTER**  
CTO

25+ years' experience in technology leadership, including AI, analytics, and data, across Africa, Asia, the Middle East, and the UK



**MORGAN KNOL**  
CHIEF OF STAFF

25+ years' experience in EPC, EPCM, and engineering consultancy, with project execution across Asia, Oceania, and the Middle East



**50 GW & \$80bn**  
of Major Energy Projects Delivered by the Team



# 250+ Years in Infra, Power & Energy Project Delivery



**ANDREW MITCHELL**  
PROJECT SERVICES  
DIRECTOR

20+ years' experience in Project Controls and Commercial Management through the full project lifecycle in Hydrocarbons and Renewable energy across the UK, Middle East, and Africa



**KENNETH BURNS**  
ENGINEERING DIRECTOR

20+ years' experience in engineering leadership across marine, manufacturing, construction, and consultancy in the UK, Norway, and UAE



**CALLUM EASTON**  
PROJECT DIRECTOR

17+ years of leadership in EPC project delivery, driving complex major projects from concept to completion across UK, Europe and the Middle East



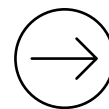
**PETER CHIANG**  
COMMERCIAL & COMPLIANCE  
DIRECTOR

20+ years' experience in commercial, legal, and compliance management for energy and infrastructure projects, specializing in contracts, governance, and risk control



**NATHAN DALY**  
ESG DIRECTOR

20+ years' experience in business operations and ESG across construction and energy sectors, specializing in sustainability and governance



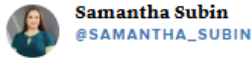
Successfully delivered projects in  
**5 Continents & 20+ Countries**

# The AI Revolution has Begun

AI EFFECT

## OpenAI logged its first \$1 billion month but computing power demand is ‘voracious,’ CFO says

PUBLISHED WED, AUG 20 2025-10:57 AM EDT | UPDATED WED, AUG 20 2025-8:26 PM EDT



Samantha Subin  
@SAMANTHA\_SUBIN

SHARE

### KEY POINTS

- OpenAI CFO Sarah Friar said the company hit its first \$1 billion revenue month in July and that its biggest challenge is insufficient computing power to meet the demand of AI.
- CEO Sam Altman said last week that the company expects to spend trillions on data centers.
- Friar said the company is seeing an acceleration in some paid subscriptions for its new ChatGPT-5 model, which faced criticism from some users following its debut.

Unprecedented demand for computing power driven by AI growth

JLL SEE A BRIGHTER WAY

## North America Data Center Report Midyear 2025

### Vacancy declines to a new record low, constraining sector growth

Colocation vacancy is nearing 0%, which is constraining economic growth and undermining national security. Data centers are critical infrastructure and restrictive market conditions are counterproductive over the long-term.

The construction pipeline of 8 GW is 73% preleased, signaling that any meaningful loosening of market conditions remains a few years away at minimum. Even if preleasing activity slows significantly in the near-term, vacancy would likely remain below 5% through 2027. A more likely scenario is that vacancy holds in the 2% range through 2027.

Companies looking to expand their data center operations may be limited to preleasing in new developments. This could be followed by a year or more of waiting for construction to be completed before taking occupancy.

## But AI has an Energy Problem...



# Immediate Solution – On-Site Generation

The biggest issue we are now having is **not a compute glut, but it's a power**, and it's the ability to get the **builds done fast enough close to power**, so if you can't do that you may actually have a bunch of chips sitting in inventory that I can't plug in...

In fact **that is my problem, it's not a supply issue of chips it's the fact that I don't have warm shells to plug into.**

*Microsoft CEO Satya Nadella, Nov 2025<sup>(1)</sup>*

**Surging AI demand = Overstretched Grids**

**Utilities cannot keep up**

**T20 offer:**

- **fully integrated, directly connected, long term solutions**
- **reliable, sustainable power generation at scale**
  - **long term grid support**

**On-site generation provides greater reliability of electricity and mitigates the risks of delays from permitting or grid connections, and outages from an overstretched grid**

# Gray Fox Exec Summary

Twenty20 is developing a gigawatt-scale data center campus in Georgia, USA

We have powered land/shell options available for data center operators

Dedicated on-site generation provides a direct connection to reliable power

We can customize both internal data center fit-out and accommodate any broader site-wide needs

Accompanying industrial park allows for the development of local industry with access to reliable power

Ready to submit data for cluster study to enable grid connection



Up to **5GW** of power behind-the-meter

**5,367 acres** of contracted land

All land is **infrastructure corridor adjacent**

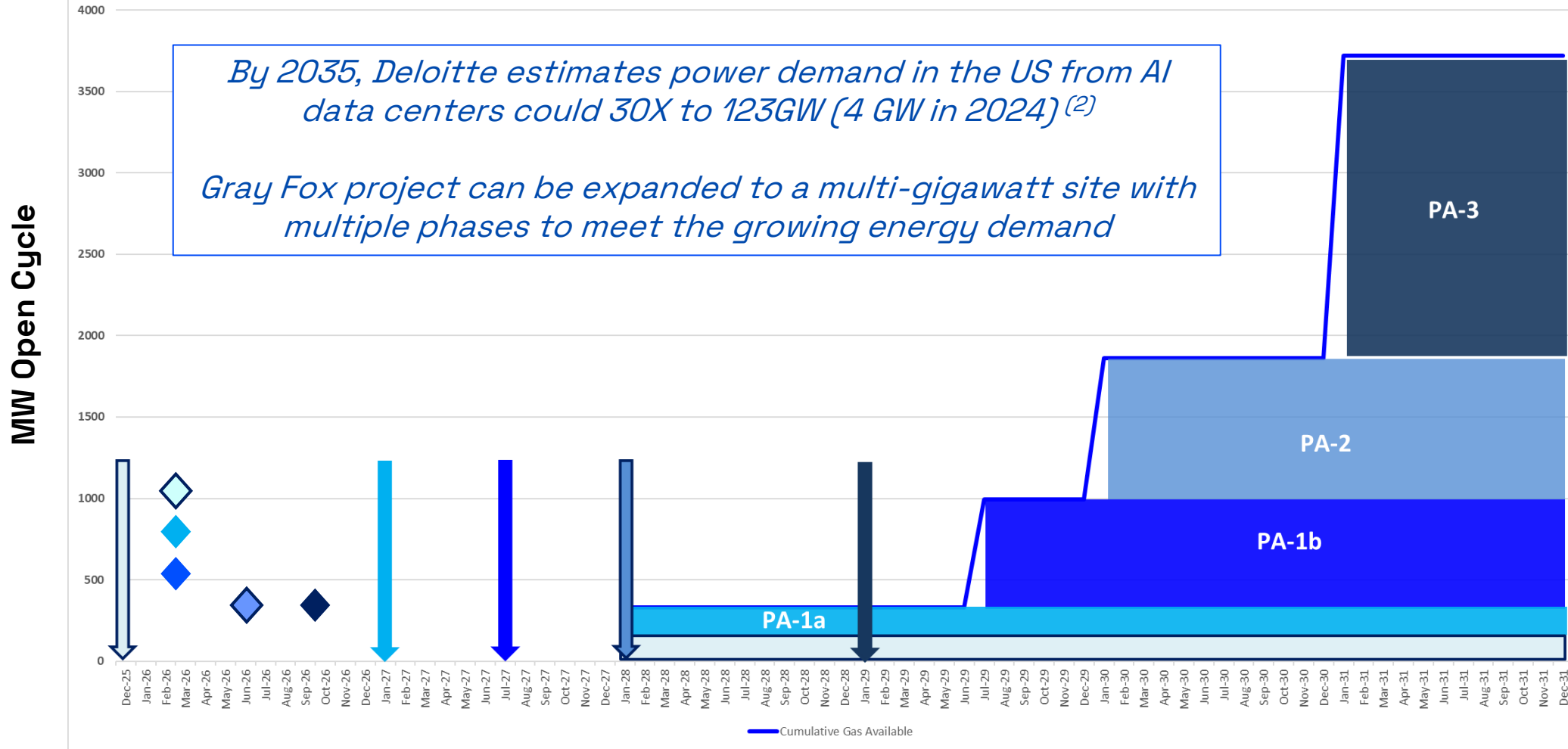
Ideal geography for **resilient connectivity**

**Welcoming local community & backers**

**Multi-continent delivery** experience

# Flexible Scalable Supply Secured

Combined Gas Development Strategy



*(2) Deloitte, "Can US Infrastructure Keep Up with the AI Economy?", Deloitte Research Center for Energy & Industrials, June 2025.*



# Turbines from Proven Partners

## Multi-Supplier Delivery Strategy

- Hybrid lease and purchase strategy being pursued to optimize cash-flow and long-term returns
- 26MW Gas fired turbines to be leased for initial project development
- 90MW Gas fired turbines to be procured for longer term project expansion
- Redundancy of equipment to guarantee electricity supply for Phase 1 - 150MW Data Center
- Proven Tier 1 manufacturers



# Positive Community Impact



Partnership with Local Trades College to **train and certify residents** for construction, and long-term **skilled professionals** for ongoing plant operations



## Stimulates Economic Development:

- Utilizes existing local industries
- Enables new industry development
- Increases local economic activity



On site generation means Gray Fox requires no grid power, however, once connected, the plant can support the local grid, reducing losses and enhancing reliability



**500+**  
**DESIGN & CONSTRUCTION JOBS**



**1,000+**  
**FULL-TIME JOBS (Long Term)**

**= Supportive Local Development Authorities...**



# Red Griffin Exec Summary

Twenty20 is developing a gigawatt-scale data center campus in Poland

Dedicated grid connection of 790MW across two sites. Independent substations on-site provides a direct connection to reliable power

Up to 1.5GW of additional gas generation can be constructed at site from adjacent pipeline

We have powered land/shell options available for data center operators

We can both customize internal data center fit-out and accommodate any broader site-wide needs



**790MW** of grid power supply to site



**Up to 1.5GW** of power behind-the-meter from gas



**1,420** acres of contracted land



All land is **infrastructure adjacent**



Ideal geography for **resilient connectivity**



**Welcoming local community & backers**



**Multi-continent delivery experience**

---

## DISCLOSURES

This confidential communication for T20 Holdings Ltd. (the “Company”) is made solely for the purposes of familiarizing potential investors with the Company and determining whether such investors might have an interest in a securities offering contemplated by the Company, and is neither an offer to sell nor a solicitation of an offer to buy any securities mentioned herein. Any such offering of securities will be made only by means of a registration statement (including a prospectus). No such registration statement has become effective as of the date of this presentation. This publication is confidential for the information of the addressee only and may not be reproduced in whole or in part; copies circulated, or disclosed to another party, without the prior written consent of the Company are strictly prohibited.

Statements in this report that are not statements of historical fact are forward-looking statements. Such forward-looking statements include, without limitation, statements regarding the Company’s future results of operations or financial condition, business strategy, plans and objectives of management for future operations and market size and growth strategy. Words such as “believe,” “anticipate,” “plan,” “expect,” “intend,” “will,” “may,” “goal,” “project,” “estimate,” “potential” and similar expressions are intended to identify forward-looking statements, though not all forward-looking statements necessarily contain these identifying words. These forward-looking statements are based on the beliefs of the Company’s management as well as assumptions made by and information currently available to the Company. Forward-looking statements are subject to numerous assumptions, risks (both known and unknown) and uncertainties, and other factors which change over time. These forward-looking statements should not be taken as forecasts or promises nor should they be taken as implying any indication, assurance or guarantee that the assumptions on which such forward-looking statements have been made are correct or exhaustive or, in the case of the assumptions, fully stated in this report. You are cautioned not to place undue reliance on these forward-looking statements, which speak only as of the date this report is given.

Information and opinions presented in this report have been obtained or derived from sources believed by the Company to be reliable, but the Company makes no representation as to their accuracy or completeness. The Company accepts no liability for loss arising from the use of the material presented in this report, except that this exclusion of liability does not apply to the extent that such liability arises under specific statutes or regulations applicable to the Company. This report is not to be relied upon in substitution for the exercise of independent judgment. The Company may have issued, and may in the future issue, other reports that are inconsistent with, and reach different conclusions from, the information presented in this report. Those reports reflect the different assumptions, views and analytical methods of the analysts who prepared them and the Company are under no obligation to ensure that such other reports are brought to the attention of any recipient of this report.

The information contained herein is current only as of June 1, 2026, unless otherwise stated. The Company does not undertake, and expressly disclaims, any obligation to update or revise this presentation to reflect events, circumstances, or changes occurring after that date.



**Twenty20**  
ENERGY



Thank you

